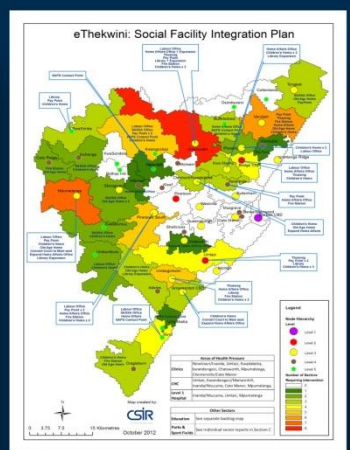
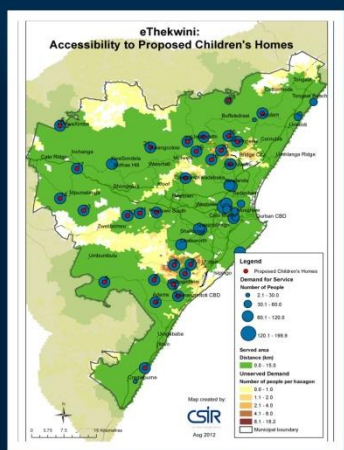
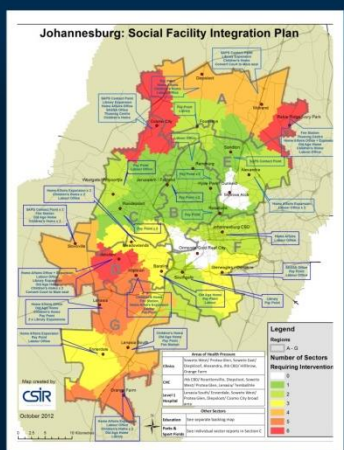
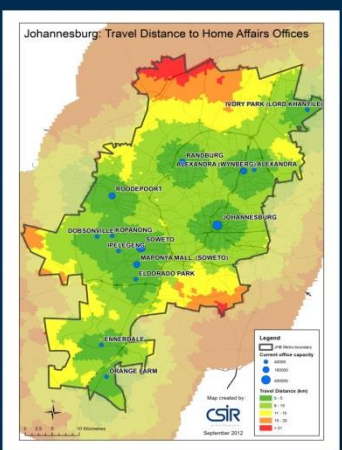




Geographic accessibility study of social facility and government service points for the metropolitan cities of Johannesburg and eThekweni 2011/12



FEBRUARY 2013



the dpsa
 Department:
 Public Service and Administration
 REPUBLIC OF SOUTH AFRICA

CSIR
 our future through science

PROJECT TEAM AND SECTOR RESPONSIBILITIES

Chéri Green – CSIR	: Project Manager
Gerbrand Mans – CSIR	: GIS Team Leader, SAPS and selected metropolitan facilities
Alize le Roux – CSIR	: Justice and Home Affairs
Peter Schmitz – CSIR	: Labour and Education
Millicent Mokgalaka – CSIR	: Selected metropolitan facilities
David McKelly – CSIR	: Fire
Mawande Ngidi – CSIR	: GCIS and selected metropolitan facilities
Willem Badenhorst – Mandala GIS	: Health
Prof Larry Zietsman – Geographical Systems Research Bureau CC	: Social Development
Dr Peter Kok	: Demographics
Tansy Argue	: Language Editing

Prepared for:

The Department of Public Service and Administration
Private Bag X916
PRETORIA
Tel: +27 12 336 1040
Fax: +27 12 326 7802

Prepared by:

CSIR: Built Environment
PO Box 395
PRETORIA
Tel: +27 12 841 3051
Fax: +27 12 841 5045

ISBN: 978-0-7988-5608-9

Report: CSIR/BE/SPS/ER/2012/0061/B

Click on the links below to access parts of the report.

[Executive Summary](#)

[Part A: Strategic Overview and Key Findings](#)

[Part B: Background, Methodology, Approach and Stakeholder Interaction](#)

Sector Reports:

[Health](#)

[Basic Education](#)

[Social Development and South African Social Security Agency](#)

[Home Affairs](#)

[South African Police Service](#)

[Justice and Constitutional Development](#)

[Labour](#)

[Government Communication and Information System](#)

[Metropolitan Municipality of Johannesburg: Municipal Facilities](#)

[Metropolitan Municipality of eThekweni: Municipal Facilities](#)