

Regional Spatial Profiler

What is the Regional Spatial Profiler?

It is a component within the StepSA website that focuses on **providing regional scale spatial planning information to support planners and decision-makers**. It consists of a set of interactive maps, tables and text documents. The profiler can be accessed through selecting the Regional Profiler section within the stepSA website. There are links on the Regional Profiler page that navigate to both the interactive maps as well as regional scale information.



Why the need for a Regional Spatial Profiler?

Despite the availability of a number of national datasets, there remained a need for a series of processed and combined data layers to support regional- and district level planning. By engaging with users/stakeholders these information gaps and duplications were identified. One crucial shortcoming is the use of varying units of analysis and data at different resolutions. Temporal data is also lacking or difficult given that spatial units used between versions often change. It is not the objective to duplicate information already available through other sites; instead the focus is to provide analysed information or relevant information sets developed at the CSIR.

The interactive Regional Spatial Profiler can be used to:

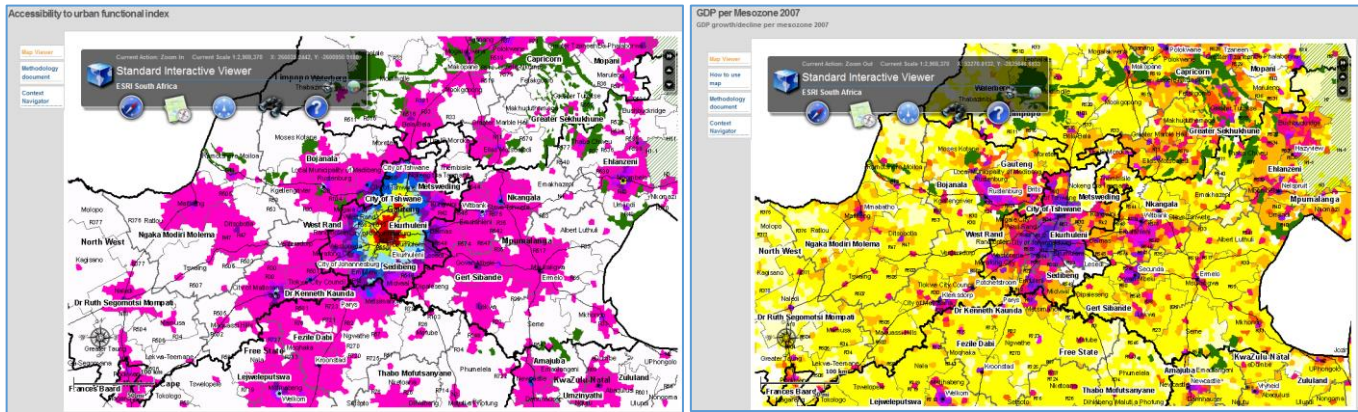
- Develop demand profiles to inform investment and policy decisions,
- Inform and enhance provincial, regional and district SDFs and sector plans (housing, transport, infrastructure),
- Develop baseline profiles of areas to support integrated socio-ecological research, and
- To track spatial transformation and change in priority regions.

Key components and value of the Regional Spatial Profiler?

The Regional Spatial Profiler is largely based on a geo-spatial analysis platform that enables the spatial aggregation of national data-sets to zones of approximately 49 km². This allows for an increase in the resolutions of information often limited to larger units of analysis. The Regional Spatial Profiler aims to enhance an analysis of where population and economic activities are located, where environmental vulnerabilities exist, and where people are living in areas with low physical accessibility to services and employment. Enhanced insight into such issues may lead to more informed investment decisions during regional planning process, which in turn would have a positive effect on the impact of such investment. The information within the profiler also aims to enhance the **contextual understanding** of the district area in a broader functional region, as well as to **spatially quantify dualities** such as the extent of poverty or economic



activity in an area and where concentrations of these are located. By combining different information items for specific localities the typical characteristics, different potentials and contexts can be **spatially differentiated**.



Who is the target audience of the Profiler?

The focus is to support planning officials and planning professionals at district, regional, provincial and national level (strategic and spatial planning). Additionally it also aims to support planners in training by providing data, publications and relevant documentation.

Where can the Regional Spatial Profiler be accessed?

The information is provided in the form of dynamic and static maps and tables that users can view and download at no cost from the stepSA website. The website can be accessed at the following link <http://stepsa.org>

Ultimate aim of the Regional Spatial Profiler?

To serve as an integrated science-based **information platform**, aimed at improving the **quality of evidence** (in the form of spatial and temporal information), with a view to **strengthen integrated spatial planning** of government across a **range of settlement scales**.

For more information on the Regional Spatial Profiler please contact:

Johan Maritz
CSIR Built Environment Unit
jmaritz@csir.co.za
012 841 2928

Gerbrand Mans
CSIR Built Environment
gmans@csir.co.za
021 888 2546