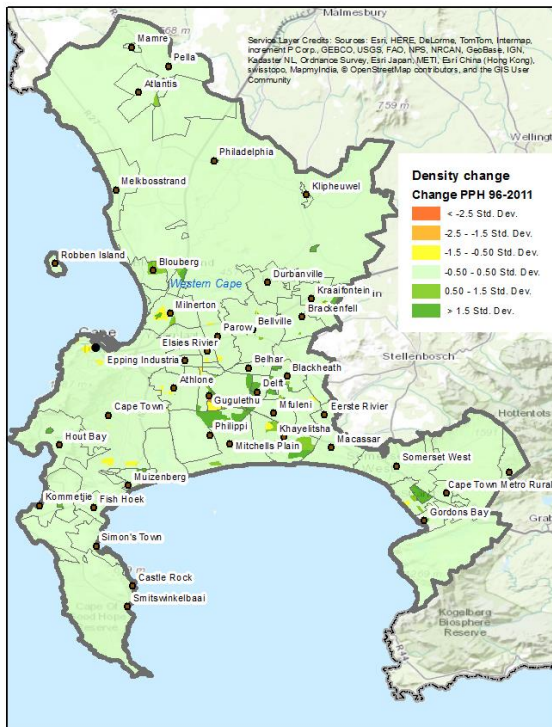


Population change (density) 1996-2011 per sub-place	
Indicator group:	Demographic trends (need to have a list of categories)
Indicator number:	I_001
Document location:	H:\Projects_2015\Indicator\Population_change_2015\
Geodatabase:	I:\BE\SPS\Resources\Indicators_GDB\

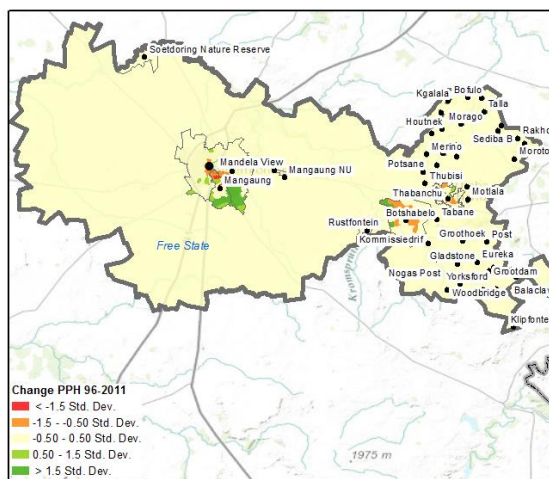
Description:

This item considers the change in density within subplaces between periods. In order to make comparison possible it was necessary to relate the sub-place data for 1996 to the sub-places of 2011. The density is calculated as people per hectare.

Cape Town metro



Mangaung



Legend

- SP label
- Main Cities
- ▭ SACN city
- ▭ Main place
- ▭ Province

Note:
Using census information to reflect change in density between 1996 and 2011.

Change in density per sub-place (People per Hectare) 96-2011 (Standard deviation).

Indicator:	Population change 1996-2011
Geographic coverage:	South Africa
Unit type:	Sub-place
Time period:	1996-2011 (only two periods)
Source:	CSIR BE produces the processed tables and maps at Sub-place
Origin (if processed):	Statistics South Africa
Date published:	May 2015
Update(s)/version:	Version 1
Background:	Population change per hectare to reflect the change within the city extent.
Statistical and methodological information:	The item was developed CSIR BE.
Contact Information:	Ms. Alize le Roux CSIR Built Environment Tel: 021 888 3242 Email: aleroux1@csir.co.za
Citation information:	<i>CSIR BE. 2015. Indicator – Population change – density per Hectare per subplace 1996-2011. (Prepared in support of SACN – State of the Cities Report 2015).</i>
Further information:	Also see Population per sub-place for 1996, 2001 and 2011.